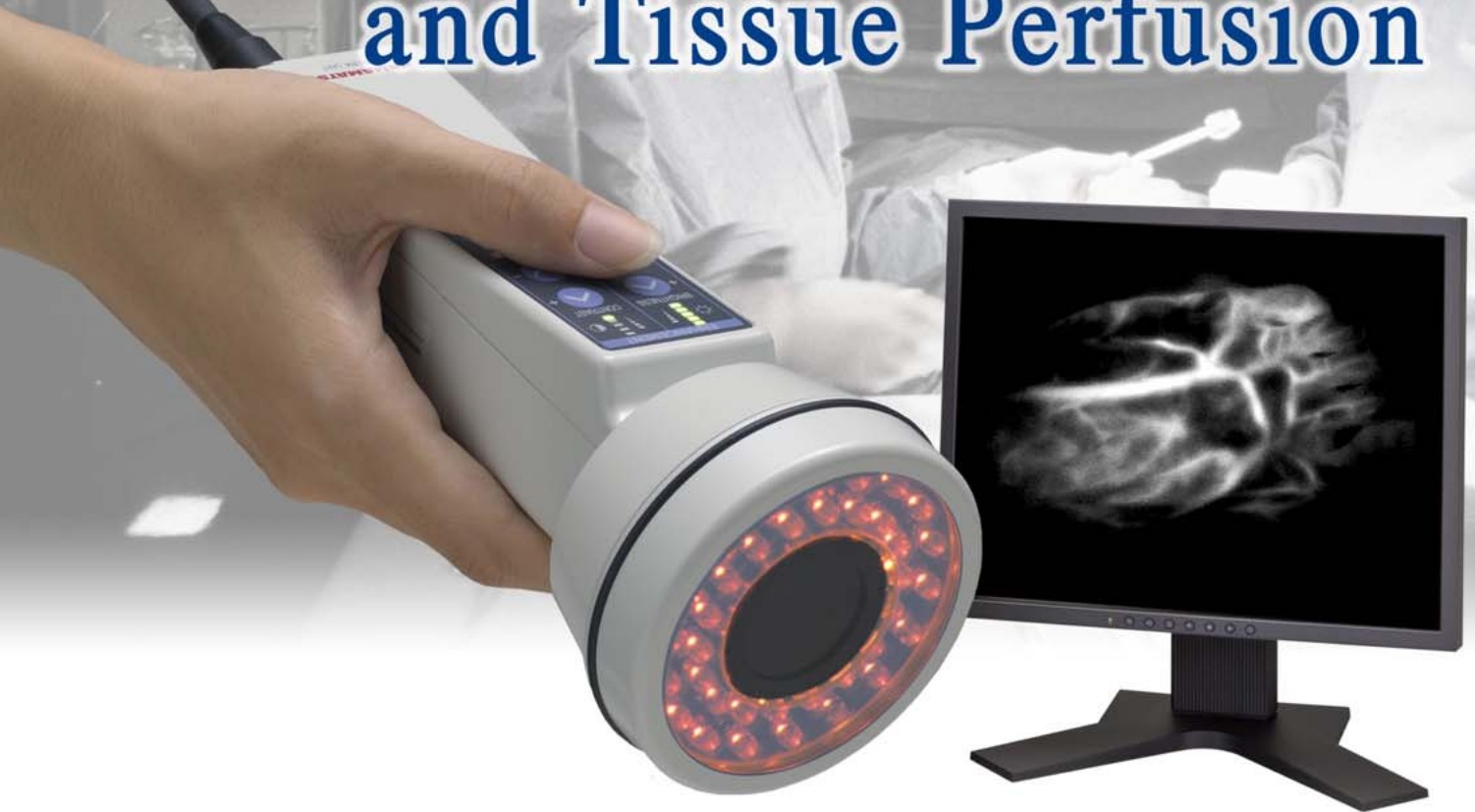


# Visualize Blood Flow and Tissue Perfusion



## PDE<sup>®</sup> Near Infrared Fluorescence Imager

### Plastic Surgery

Skin and muscle flaps

### General Surgery

Post-operative wound-healing  
Identification of necrotic tissue

### Abdominal Surgery

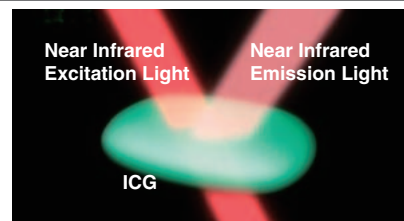
Gastro-intestinal tract

### Internal Medicine

Diabetic extremities

The PDE is used in various areas where the evaluation of tissue/organs for perfusion and blood flow are critically important.

### ICG Fluorescence Method



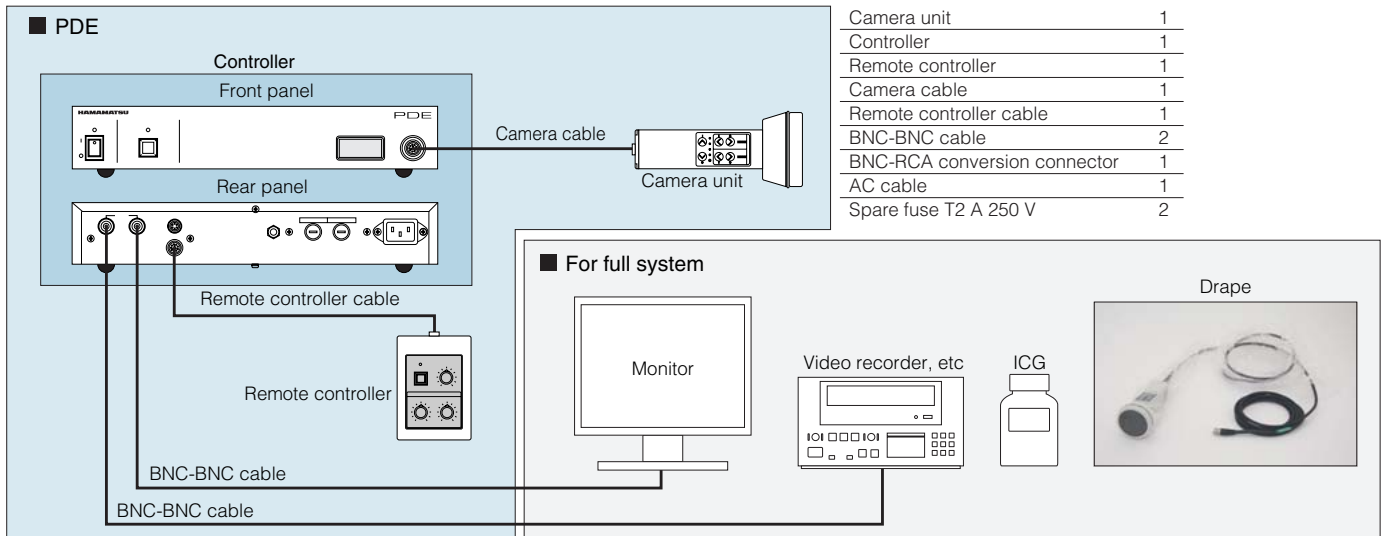
#### Observation by ICG fluorescence:

When ICG is administered as a bolus intravenously, the PDE is able to visualize the ICG fluorescence allowing a qualitative assessment of blood flow and tissue perfusion.

#### Fluorescence characteristics of ICG:

After bonding with plasma protein in the blood, ICG will become excited with near infrared light and fluoresce at a slightly longer near infrared wavelength. The PDE's special sensor and filters will see this fluorescence clearly through a range of human soft tissue.

# Configuration



\*Monitor, video recorder, ICG and drape are not included under the standard configuration of PDE, which should be prepared in local. Please prepare the monitor with image output in NTSC format by BNC or RCA connector for image input.

# Specification

|                               |   |  |
|-------------------------------|---|--|
| Type No.                      | C9830                                   |  |
| Power supply voltage          | AC100 V to AC 240 V                     |  |
| Power frequency               | 50 Hz / 60 Hz                           |  |
| Power consumption             | Max. 60 VA                              |  |
| Ambient operating temperature | + 10 °C to + 40 °C                      |  |
| Ambient operating humidity    | 20 % to 70 % (with no condensation)     |  |
| Ambient storage temperature   | 0 °C to + 40 °C                         |  |
| Ambient storage humidity      | 20 % to 70 % (with no condensation)     |  |
| Dimension / Weight            | Camera unit                             | Approx. 80 mm (W) × 181 mm (D) × 80 mm (H) (not including projections)<br>Approx. 0.5 kg (not including cables and accessories)  |
|                               | Controller                              | Approx. 322 mm (W) × 283 mm (D) × 55 mm (H) (not including projections)<br>Approx. 2.8 kg (not including cables and accessories) |
| Controller function           | Noise reduction<br>Contrast enhancement |  |
| Video output                  | Black and White (EIA), 2 BNC            |  |

FDA approved: K110480

PDE is a registered trademark of Hamamatsu Photonics K.K. (Australia, EU, Japan)

**HAMAMATSU PHOTONICS K.K.** [www.hamamatsu.com](http://www.hamamatsu.com)

**Distributed in USA**

**Mitaka USA Inc.**

2337 Lucky John Dr. Park City, Utah, USA  
 Phone: +1(435)649-2236, Fax: +1(435)608-6397  
 E-mail: [info@mitakausa.com](mailto:info@mitakausa.com)  
 URL: [www.MitakaUSA.com](http://www.MitakaUSA.com)

**Manufacturer**

**HAMAMATSU PHOTONICS K.K., Systems Division**

812 Joko-cho, Higashi-ku, Hamamatsu-City, Shizuoka-Pref, 431-3196, Japan,  
 Phone: (81)53-431-0124, Fax: (81)53-435-1574,  
 E-mail: [export@sys.hpk.co.jp](mailto:export@sys.hpk.co.jp)

**Initial Distributor/Importer**

**Hamamatsu Corporation**

360 Foothill Road, Bridgewater. N.J. 08807-0910, U.S.A.,  
 Phone: (1)732-356-5576, Fax: (1)732-563-0710  
 E-mail: [dsmith@hamamatsu.com](mailto:dsmith@hamamatsu.com)